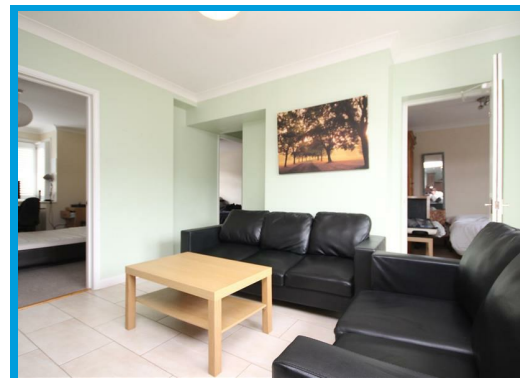
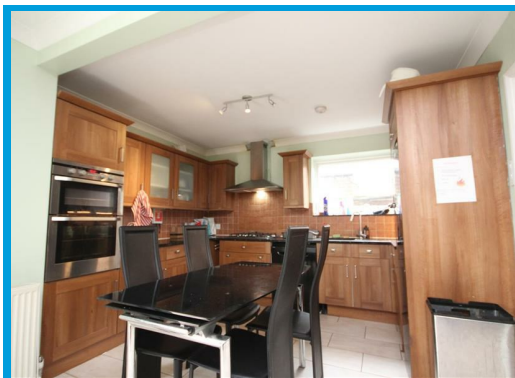
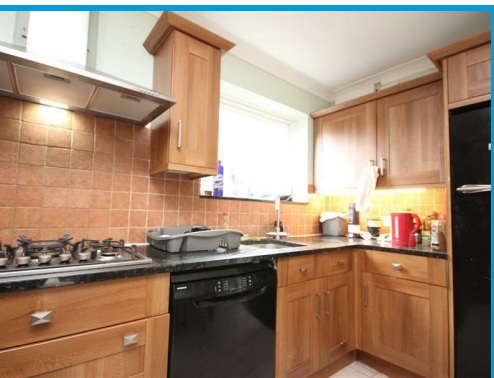




Aldershot Road, Guildford, Surrey GU2 8BH

£3,800 Per Calendar Month

**** STUDENT ACCOMODATION 2026-2027 ACADEMIC YEAR**** Located in a popular residential location, this SIX DOUBLE bedroom student house offers spacious and very well presented accommodation throughout within easy access to Guildford town centre, Surrey University and the A3.



Description

IDEAL FOR STUDENTS AND SHARERS- A beautifully presented and spacious six bedroom student property located within easy access to Surrey University, Guildford town centre and A3 access.

The property comprises an entrance hall leading to a large kitchen/ diner, lounge, three double bedrooms, shower room and further WC with free standing shower.

On the first floor, the property boasts three double bedrooms, family bathroom and separate WC.

The property further features a lawned garden with large decking area and driveway parking for up to three cars.

